

**SCREENING REPORT FOR AN ENVIRONMENTAL AUTHORIZATION OR  
FOR A PART TWO AMENDMENT OF AN ENVIRONMENTAL AUTHORISATION  
AS REQUIRED BY THE 2014 EIA REGULATIONS – PROPOSED SITE  
ENVIRONMENTAL SENSITIVITY**

**EIA Reference number:** To be Determined

**Project name:** Paula Poultry Abattoir

**Project title:** Proposed Paula Poultry Abattoir on Farm Paula, Portion 1, 1063, Brandfort

**Date screening report generated:** 24/02/2020 15:27:09

**Applicant:** Estian de Swardt

**Compiler:** Michelle Boshoff

**Compiler signature:**

.....

SM Services  
& Consulting

# Table of Contents

- Proposed Project Location ..... 3
  - Orientation map 1: General location ..... 3
- Map of proposed site and relevant area(s) ..... 4
  - Cadastral details of the proposed site ..... 4
  - Wind and Solar developments with an approved Environmental Authorisation or applications under consideration within 30 km of the proposed area ..... 4
  - Environmental Management Frameworks relevant to the application ..... 4
- Environmental screening results and assessment outcomes ..... 5
  - Relevant development incentives, restrictions, exclusions or prohibitions ..... 5
- Map indicating proposed development footprint within applicable development incentive, restriction, exclusion or prohibition zones..... 6
  - Proposed Development Area Environmental Sensitivity ..... 6
  - Specialist assessments identified..... 7
- Results of the environmental sensitivity of the proposed area ..... 9
  - MAP OF RELATIVE AGRICULTURE THEME SENSITIVITY ..... 9
  - MAP OF RELATIVE ANIMAL SPECIES THEME SENSITIVITY ..... 10
  - MAP OF RELATIVE AQUATIC BIODIVERSITY THEME SENSITIVITY ..... 11
  - MAP OF RELATIVE ARCHAEOLOGICAL AND CULTURAL HERITAGE THEME SENSITIVITY ..... 12
  - MAP OF RELATIVE CIVIL AVIATION THEME SENSITIVITY ..... 13
  - MAP OF RELATIVE PALEONTOLOGY THEME SENSITIVITY ..... 14
  - MAP OF RELATIVE PLANT SPECIES THEME SENSITIVITY ..... 15
  - MAP OF RELATIVE DEFENCE THEME SENSITIVITY..... 16
  - MAP OF RELATIVE TERRESTRIAL BIODIVERSITY THEME SENSITIVITY ..... 17

# Proposed Project Location

## Orientation map 1: General location



## Map of proposed site and relevant area(s)



## Cadastral details of the proposed site

Property details:

No	Farm Name	Farm/ Erf No	Portion	Latitude	Longitude	Property Type
1	WITPAN	1198	0	28°46'44.29S	26°17'5.05E	Farm
2	DORISVILLE S	289	0	28°49'13.88S	26°18'24.16E	Farm
3	PAULA	1063	0	28°48'10.37S	26°18'8.95E	Farm
4	WITPAN	1198	0	28°46'49.12S	26°17'5.76E	Farm Portion
5	DORISVILLE S	289	0	28°49'22.07S	26°18'52.44E	Farm Portion
6	PAULA	1063	1	28°47'57.93S	26°17'55.82E	Farm Portion
7	PAULA	1063	0	28°48'17.67S	26°18'16.66E	Farm Portion

Development footprint<sup>1</sup> vertices:

No development footprint(s) specified.

## Wind and Solar developments with an approved Environmental Authorisation or applications under consideration within 30 km of the proposed area

No nearby wind or solar developments found.

## Environmental Management Frameworks relevant to the application

<sup>1</sup> “development footprint”, means the area within the site on which the development will take place and includes all ancillary developments for example roads, power lines, boundary walls, paving etc. which require vegetation clearance or which will be disturbed and for which the application has been submitted.

No intersections with EMF areas found.

## Environmental screening results and assessment outcomes

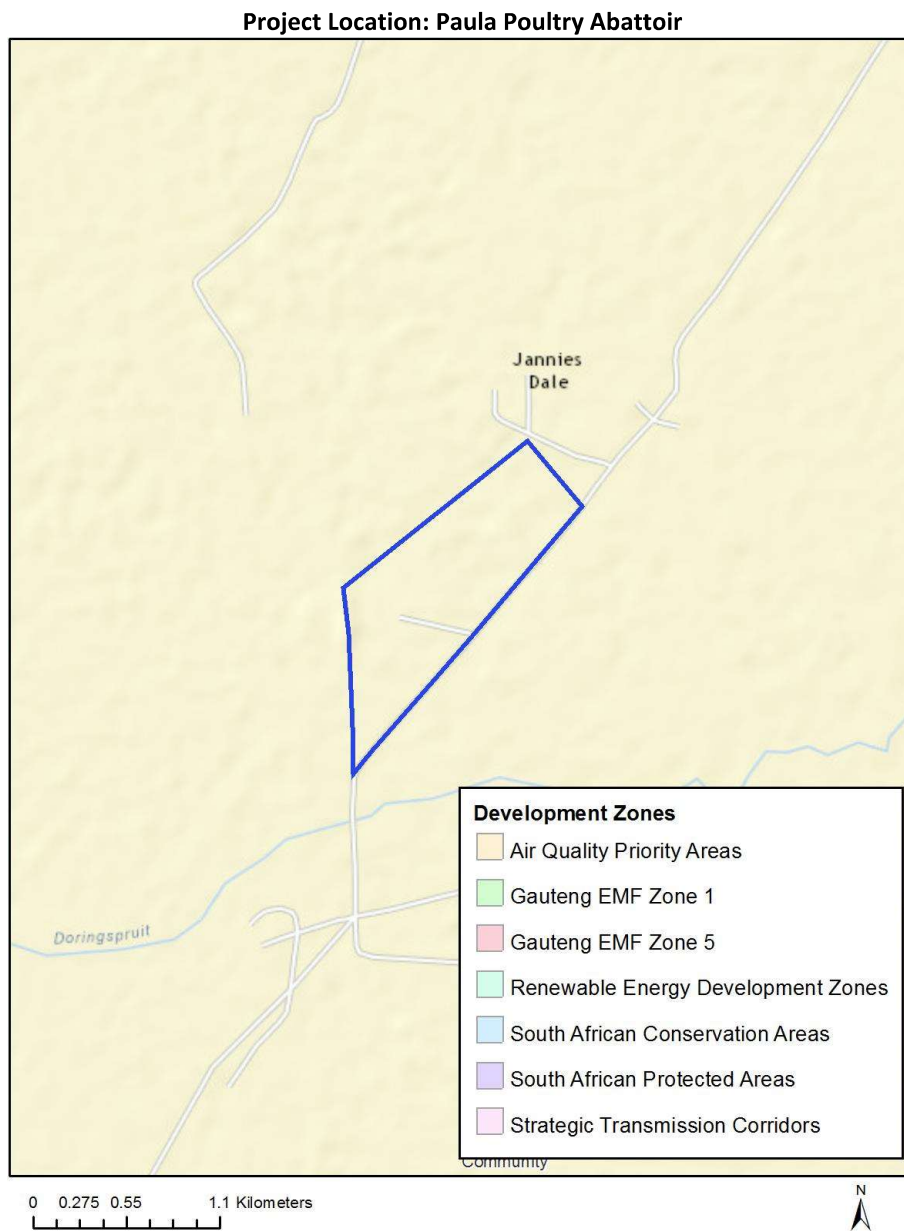
The following sections contain a summary of any development incentives, restrictions, exclusions or prohibitions that apply to the proposed development site as well as the most environmental sensitive features on the site based on the site sensitivity screening results for the application classification that was selected. The application classification selected for this report is: Activity requiring permit or licence | Fresh Water Effluent | General.

### Relevant development incentives, restrictions, exclusions or prohibitions

The following development incentives, restrictions, exclusions or prohibitions and their implications that apply to this site are indicated below.

No intersection with any development zones found.

Map indicating proposed development footprint within applicable development incentive, restriction, exclusion or prohibition zones



### Proposed Development Area Environmental Sensitivity

The following summary of the development site environmental sensitivities is identified. Only the highest environmental sensitivity is indicated. The footprint environmental sensitivities for the proposed development footprint as identified, are indicative only and must be verified on site by a suitably qualified person before the specialist assessments identified below can be confirmed.

Theme	Very High sensitivity	High sensitivity	Medium sensitivity	Low sensitivity
Agriculture Theme		X		
Animal Species Theme				X

Aquatic Biodiversity Theme				X
Archaeological and Cultural Heritage Theme		X		
Civil Aviation Theme			X	
Paleontology Theme		X		
Plant Species Theme				X
Defence Theme				X
Terrestrial Biodiversity Theme	X			

### Specialist assessments identified

Based on the selected classification, and the environmental sensitivities of the proposed development footprint, the following list of specialist assessments have been identified for inclusion in the assessment report. It is the responsibility of the EAP to confirm this list and to motivate in the assessment report, the reason for not including any of the identified specialist study including the provision of photographic evidence of the site situation.

<b>N o</b>	<b>Specialist assessment</b>	<b>Assessment Protocol</b>
1	Agricultural Impact Assessment	<a href="https://screening.environment.gov.za/ScreeningDownloads/AssessmentProtocols/DraftGazetted Agriculture Assessment Protocols.pdf">https://screening.environment.gov.za/ScreeningDownloads/AssessmentProtocols/DraftGazetted Agriculture Assessment Protocols.pdf</a>
2	Landscape/Visual Impact Assessment	<a href="https://screening.environment.gov.za/ScreeningDownloads/AssessmentProtocols/DraftGazetted General Requirement Assessment Protocols.pdf">https://screening.environment.gov.za/ScreeningDownloads/AssessmentProtocols/DraftGazetted General Requirement Assessment Protocols.pdf</a>
3	Archaeological and Cultural Heritage Impact Assessment	<a href="https://screening.environment.gov.za/ScreeningDownloads/AssessmentProtocols/DraftGazetted General Requirement Assessment Protocols.pdf">https://screening.environment.gov.za/ScreeningDownloads/AssessmentProtocols/DraftGazetted General Requirement Assessment Protocols.pdf</a>
4	Palaeontology Impact Assessment	<a href="https://screening.environment.gov.za/ScreeningDownloads/AssessmentProtocols/DraftGazetted General Requirement Assessment Protocols.pdf">https://screening.environment.gov.za/ScreeningDownloads/AssessmentProtocols/DraftGazetted General Requirement Assessment Protocols.pdf</a>
5	Terrestrial Biodiversity Impact Assessment	<a href="https://screening.environment.gov.za/ScreeningDownloads/AssessmentProtocols/DraftGazetted Terrestrial Biodiversity Assessment Protocols.pdf">https://screening.environment.gov.za/ScreeningDownloads/AssessmentProtocols/DraftGazetted Terrestrial Biodiversity Assessment Protocols.pdf</a>
6	Aquatic Biodiversity Impact Assessment	<a href="https://screening.environment.gov.za/ScreeningDownloads/AssessmentProtocols/DraftGazetted Aquatic Biodiversity Assessment.pdf">https://screening.environment.gov.za/ScreeningDownloads/AssessmentProtocols/DraftGazetted Aquatic Biodiversity Assessment.pdf</a>

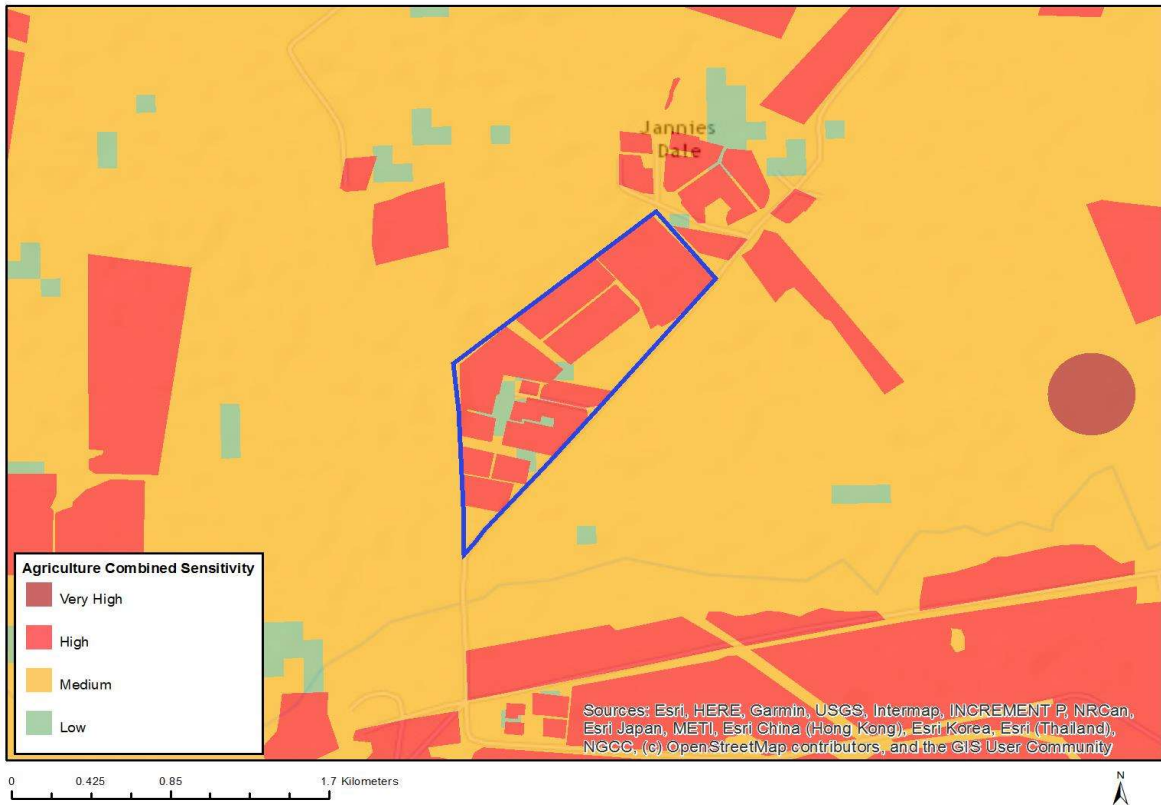
7	Health Impact Assessment	<a href="https://screening.environment.gov.za/ScreeningDownloads/AssessmentProtocols/DraftGazetted%20General%20Requirement%20Assessment%20Protocols.pdf">https://screening.environment.gov.za/ScreeningDownloads/AssessmentProtocols/DraftGazetted General Requirement Assessment Protocols.pdf</a>
8	Socio-Economic Assessment	<a href="https://screening.environment.gov.za/ScreeningDownloads/AssessmentProtocols/DraftGazetted%20General%20Requirement%20Assessment%20Protocols.pdf">https://screening.environment.gov.za/ScreeningDownloads/AssessmentProtocols/DraftGazetted General Requirement Assessment Protocols.pdf</a>
9	Plant Species Assessment	<a href="https://screening.environment.gov.za/ScreeningDownloads/AssessmentProtocols/DraftGazetted%20General%20Requirement%20Assessment%20Protocols.pdf">https://screening.environment.gov.za/ScreeningDownloads/AssessmentProtocols/DraftGazetted General Requirement Assessment Protocols.pdf</a>
10	Animal Species Assessment	<a href="https://screening.environment.gov.za/ScreeningDownloads/AssessmentProtocols/DraftGazetted%20General%20Requirement%20Assessment%20Protocols.pdf">https://screening.environment.gov.za/ScreeningDownloads/AssessmentProtocols/DraftGazetted General Requirement Assessment Protocols.pdf</a>



## Results of the environmental sensitivity of the proposed area.

The following section represents the results of the screening for environmental sensitivity of the proposed site for relevant environmental themes associated with the project classification. It is the duty of the EAP to ensure that the environmental themes provided by the screening tool are comprehensive and complete for the project. Refer to the disclaimer.

### MAP OF RELATIVE AGRICULTURE THEME SENSITIVITY

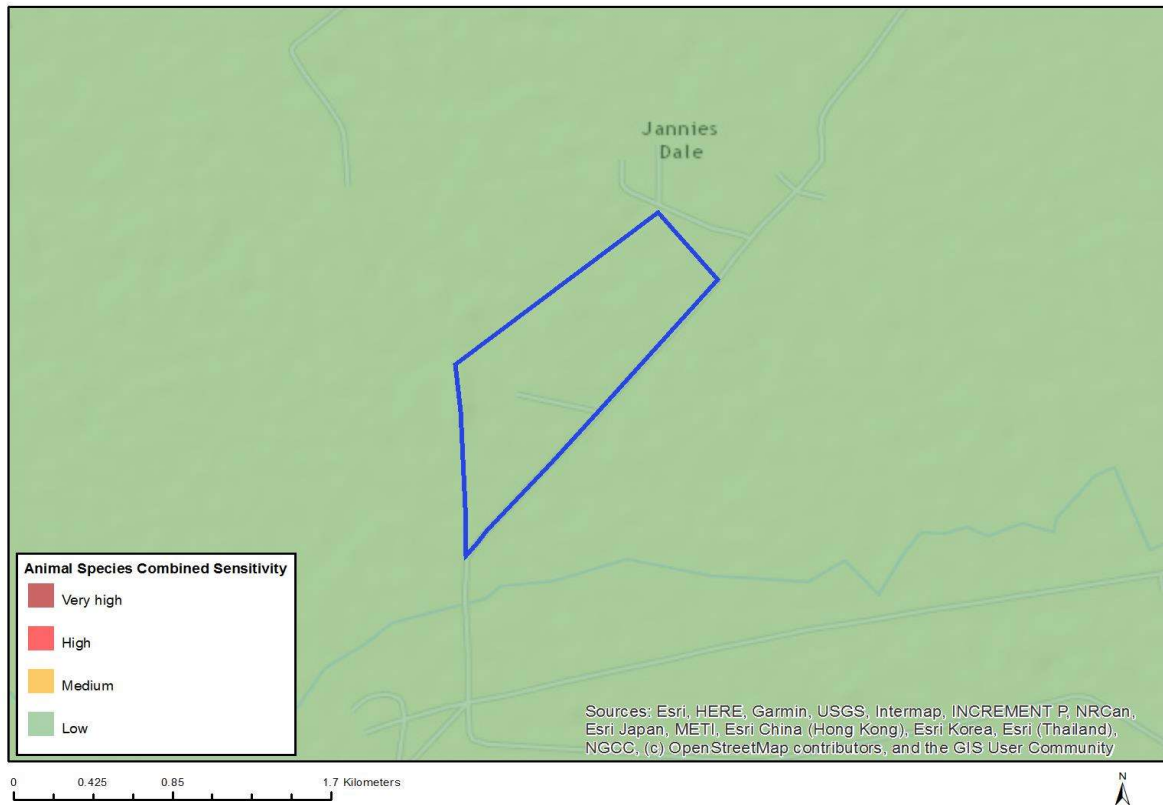


Very High sensitivity	High sensitivity	Medium sensitivity	Low sensitivity
	X		

#### Sensitivity Features:

Sensitivity	Feature(s)
High	Annual Crop Cultivation / Planted Pastures Rotation; Land capability; 06. Low-Moderate/07. Low-Moderate/08. Moderate
High	Annual Crop Cultivation / Planted Pastures Rotation; Land capability; 01. Very low/02. Very low/03. Low-Very low/04. Low-Very low/05. Low
Low	Land capability; 01. Very low/02. Very low/03. Low-Very low/04. Low-Very low/05. Low
Medium	Land capability; 06. Low-Moderate/07. Low-Moderate/08. Moderate

## MAP OF RELATIVE ANIMAL SPECIES THEME SENSITIVITY

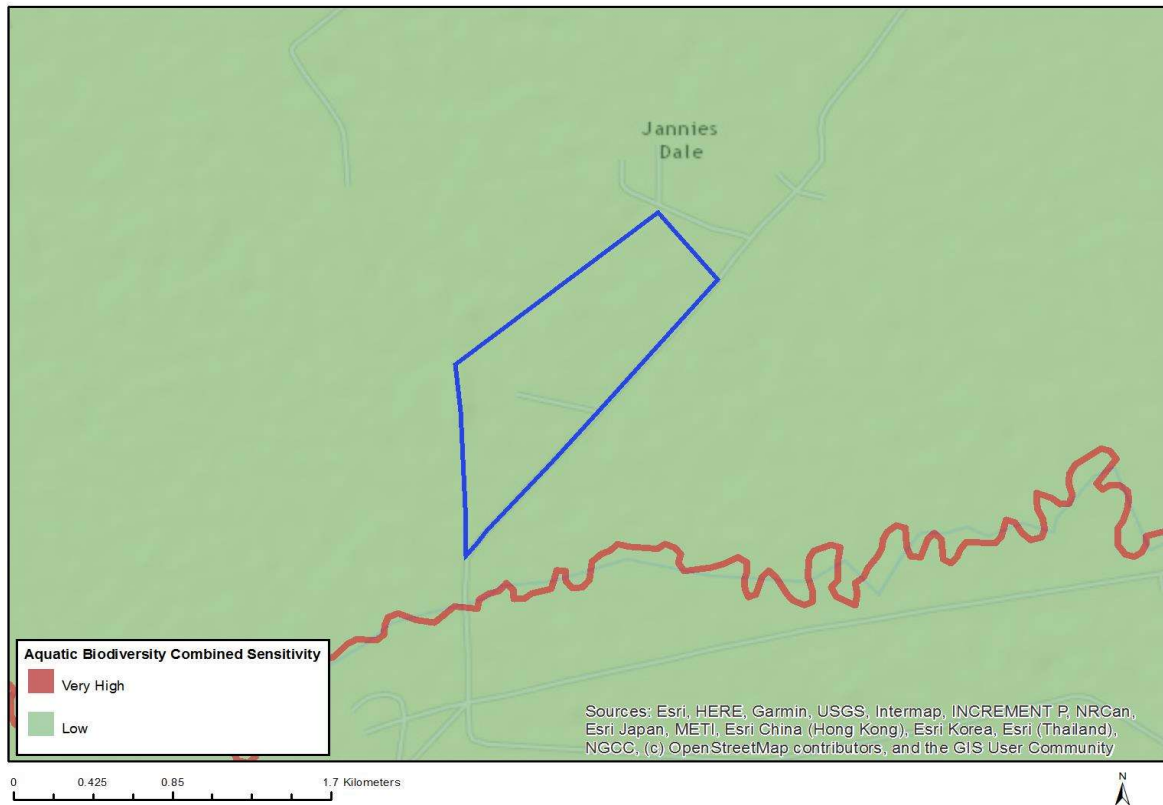


Very High sensitivity	High sensitivity	Medium sensitivity	Low sensitivity
			X

### Sensitivity Features:

Sensitivity	Feature(s)
Low	Low sensitivity

## MAP OF RELATIVE AQUATIC BIODIVERSITY THEME SENSITIVITY

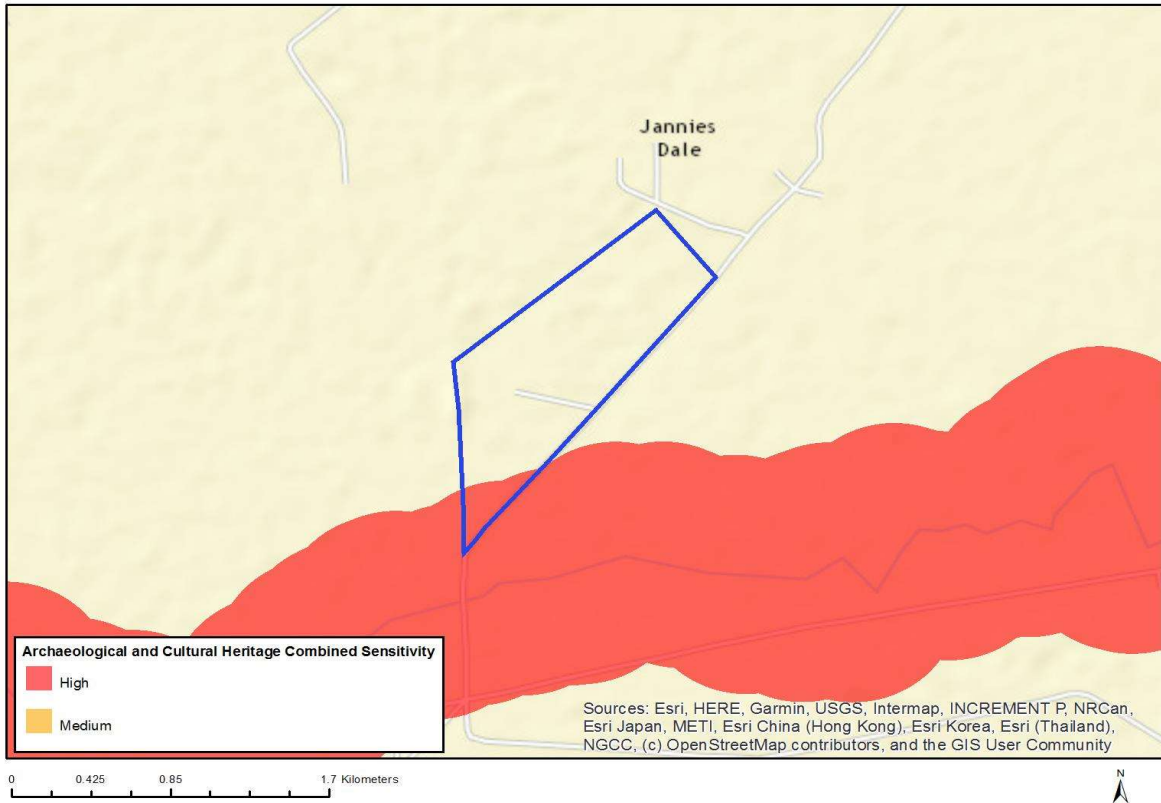


Very High sensitivity	High sensitivity	Medium sensitivity	Low sensitivity
			X

### Sensitivity Features:

Sensitivity	Feature(s)
Low	Low Sensitivity Areas

# MAP OF RELATIVE ARCHAEOLOGICAL AND CULTURAL HERITAGE THEME SENSITIVITY

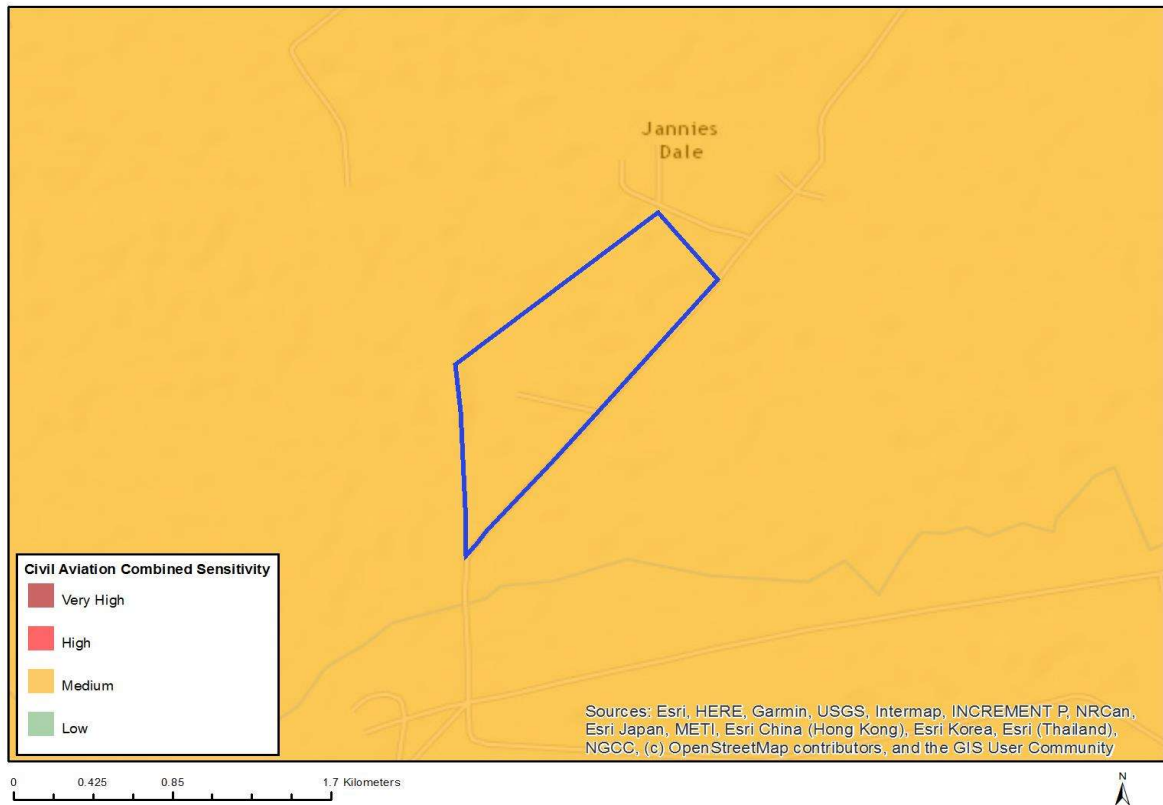


Very High sensitivity	High sensitivity	Medium sensitivity	Low sensitivity
	X		

## Sensitivity Features:

Sensitivity	Feature(s)
High	Within 500 m of an important river

## MAP OF RELATIVE CIVIL AVIATION THEME SENSITIVITY

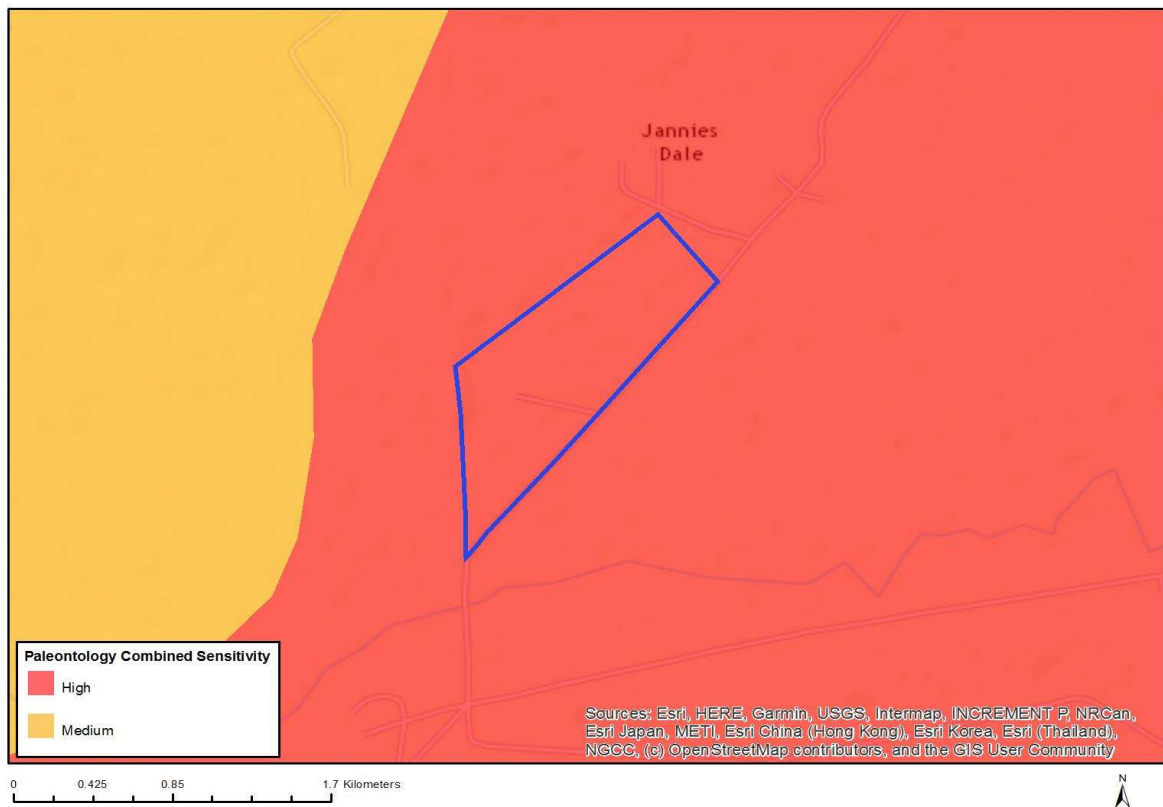


Very High sensitivity	High sensitivity	Medium sensitivity	Low sensitivity
		X	

### Sensitivity Features:

Sensitivity	Feature(s)
Medium	Between 15 and 35 km from a civil aviation radar

## MAP OF RELATIVE PALEONTOLOGY THEME SENSITIVITY

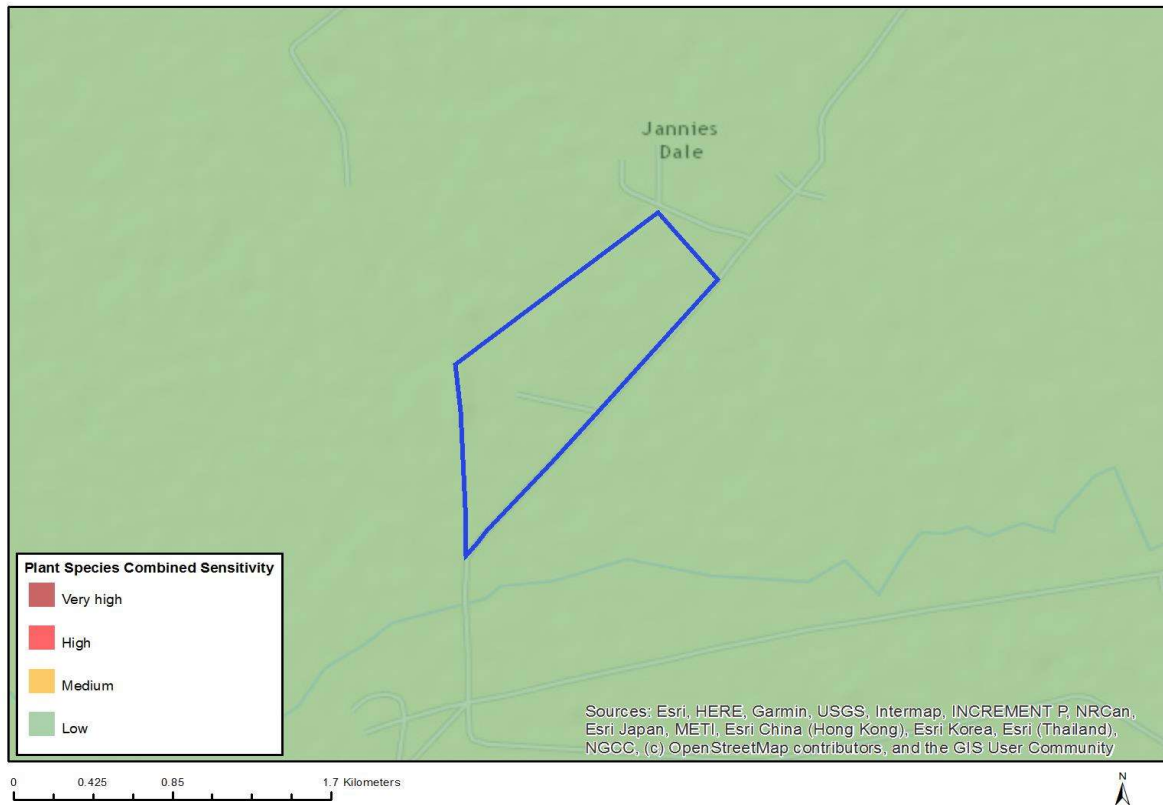


Very High sensitivity	High sensitivity	Medium sensitivity	Low sensitivity
	X		

### Sensitivity Features:

Sensitivity	Feature(s)
High	Rock units with a high paleontological sensitivity

## MAP OF RELATIVE PLANT SPECIES THEME SENSITIVITY

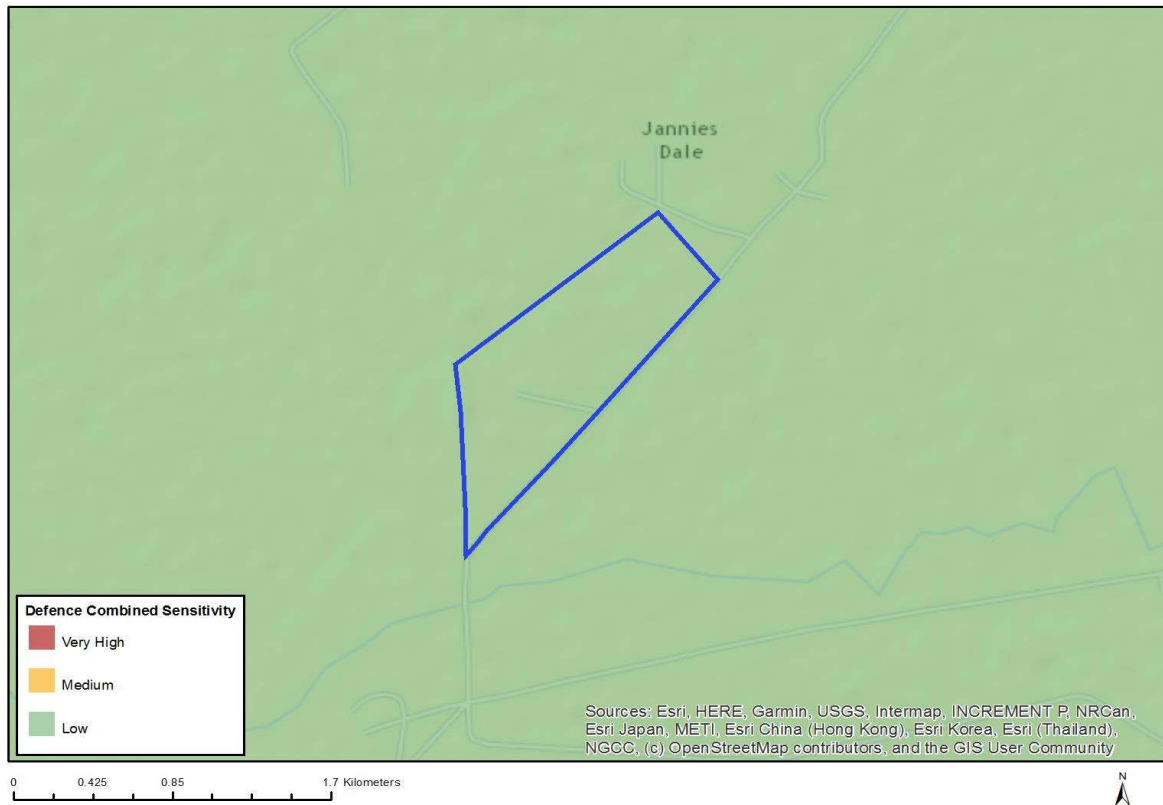


Very High sensitivity	High sensitivity	Medium sensitivity	Low sensitivity
			X

### Sensitivity Features:

Sensitivity	Feature(s)
Low	Low sensitivity

## MAP OF RELATIVE DEFENCE THEME SENSITIVITY



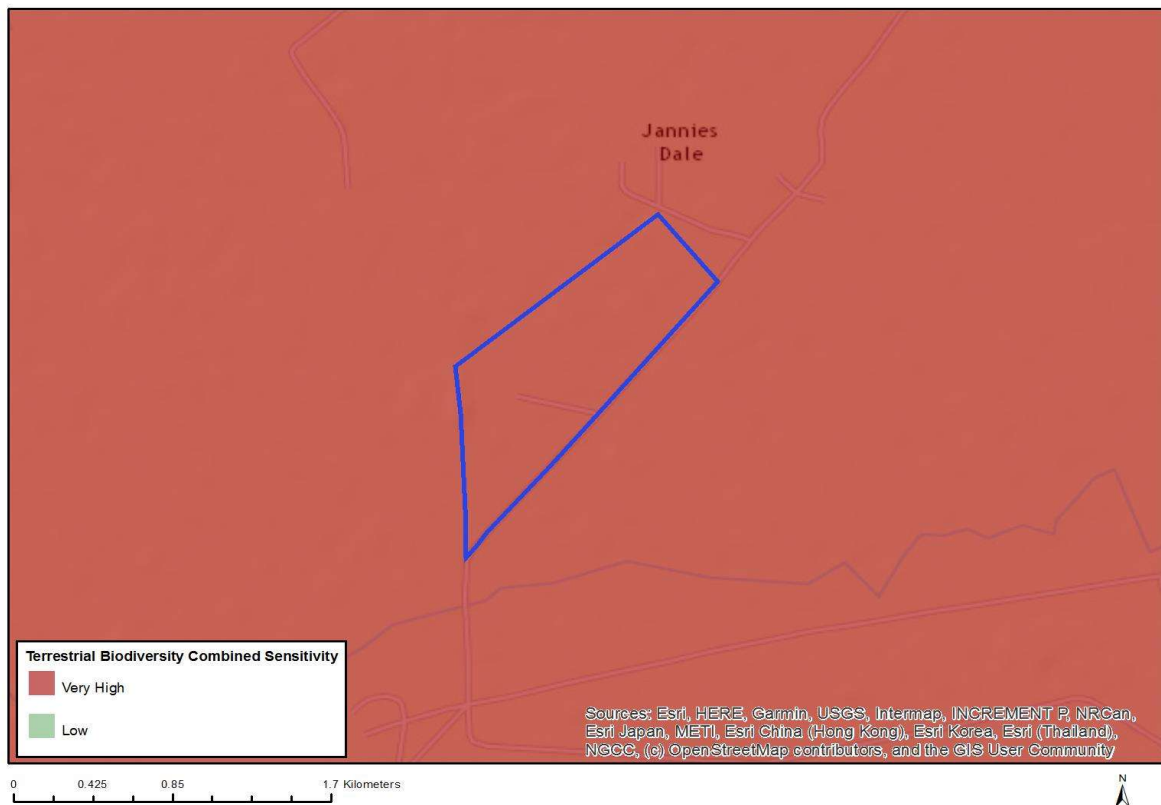
Very High sensitivity	High sensitivity	Medium sensitivity	Low sensitivity
			X

### Sensitivity Features:

Sensitivity	Feature(s)
Low	Low sensitivity



## MAP OF RELATIVE TERRESTRIAL BIODIVERSITY THEME SENSITIVITY



Very High sensitivity	High sensitivity	Medium sensitivity	Low sensitivity
X			

### Sensitivity Features:

Sensitivity	Feature(s)
Very High	Endangered ecosystem
Very High	Critical Biodiversity Area 1
Very High	Ecological Support Area 2
Very High	Freshwater ecosystem priority area quinary catchments